



Overview

This application note describes the configuration necessary to properly setup PointWare and Microsoft SQL Express 2008 R2 as well as possible Windows compatibility issues.

Note: SQL Express needs to be installed prior to PointWare installation

Note: These instructions assume this will be a new installation of SQL and not an upgrade from 2000, 2005 or 2008.

Note: There are two installation methods possible when setting up SQL and PointWare for the first time.

Installation Method 1 – Use defaults of SQL installation wizard

This method uses the defaults of the SQL installation wizard and requires a slight configuration change in PointWare. If you plan on using this installation of SQL for another purpose besides PointWare, you may want to choose this method.

1. Download and run SQL Express 2008 R2 installation package.
2. Click Yes to any User Account Control prompt.
3. Choose “New installation or add features to an existing installation”.
4. Click next and make no changes to any of the defaults in the SQL wizard.
5. After SQL wizard is complete, run PointWare installation file.
6. Choose “Create PointWare Database”.
7. Select radio button “Use Connection String” and click “Build...”
8. On the Connection tab, under “Select or enter a server name”, drop down the list and choose your PC’s name.
9. Append “SQLEXPRESS” to the server name (example: WINSERVER03\SQLEXPRESS). See fig 1.1

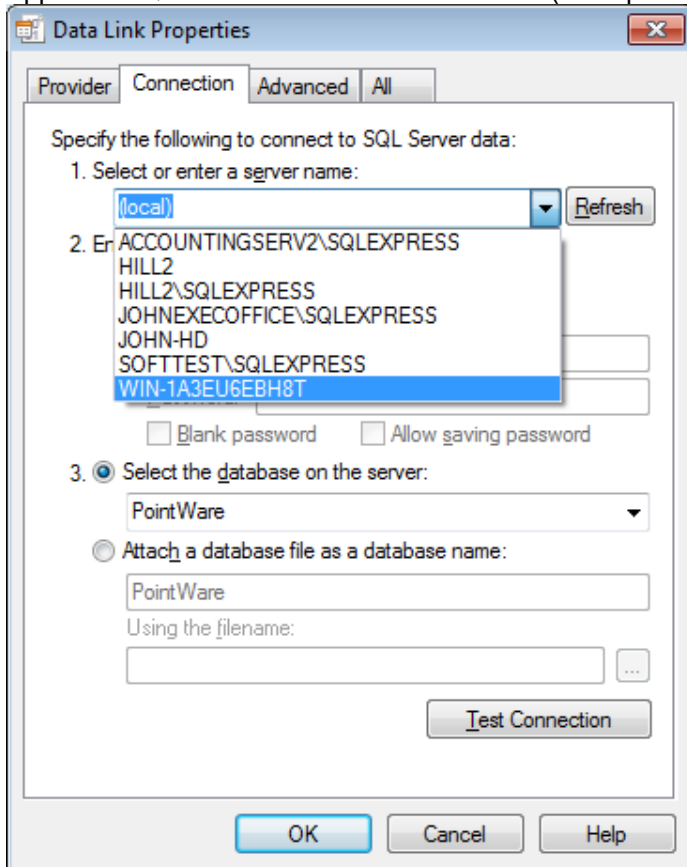


Fig1.1

10. Click OK and OK again.

Installation Method 2 – Modify defaults of SQL installation wizard

This method makes a slight change to the SQL defaults resulting in no configuration change necessary during the PointWare setup. If you do not plan on using this SQL installation for any other purpose but PointWare, you may want to choose this method.

1. Download and run SQL Express 2008 R2 installation package.
2. Click Yes to any User Account Control prompt.
3. Choose “New installation or add features to an existing installation”.
4. Click next and accept defaults until you get to the “Instance Configuration” portion. Choose “Default instance” rather than “Named instance”. See fig 2.1

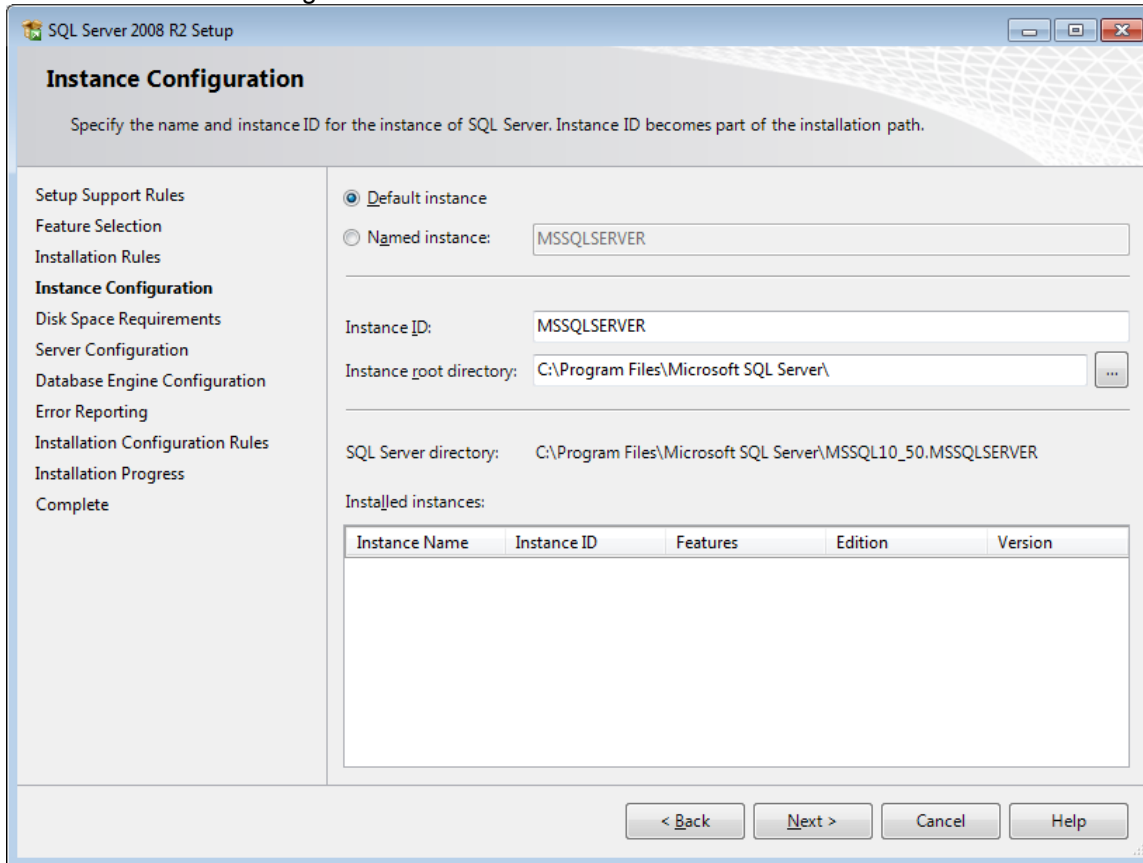


Fig 2.1

5. Click next accepting defaults the rest of the way through the wizard.
6. After SQL wizard is complete, run PointWare installation file.
7. Choose “Create PointWare Database”.
8. Click OK

Compatibility Notes

- Windows 7 and Vista may require an additional download to view the Help file associated with PointWare. Simply open the Help file and follow the instructions set forth by Microsoft to download the necessary files.
- The configuration (.INI) file associated with PointWare is stored in the following location in Windows 7 and Vista: C:\Users*UserName*\AppData\Local\VirtualStore\Program Files\PointWare\SQL\POINTWARE.INI
- PointWare software is compatible with the following SQL versions: Microsoft SQL 2000, Microsoft SQL 2000 MSDE, Microsoft SQL 2005, Microsoft SQL 2008 and Microsoft SQL 2008 R2.